

QUICK START GUIDE

OPTIONAL ACCESSORIES



DO NOT REMOVE THE INSULATING PLASTIC TAB on the sensors until you are ready to perform the pairing process. Please follow the instructions here in the "Sensor Setup Section" for easy installation. If you have already removed the insulating plastic tab, please refer to section on manual "If you need to pair the sensor again (manual pairing)."

KIT CONTENT

Main Control Unit

- Adaptor DC 12V/1A x 1
- Ethernet cable 2M x 1

Remote Keychain

- Battery CR2032 x 1

Door/Window Sensor

- Battery CR2032 x 1
- Sticky pad x 1
- Screw Set x 1

Indoor Siren

- Adaptor DC 5V/1 A x 1
- Bracket x 1
- Screw Set x 1

Indoor Camera

- Adaptor DC 5V/1.5A x 1
- Ethernet cable 2M x 1
- Camera Stand x 1
- Camera Antenna x 1

Outdoor Camera

- Adaptor DC 5V/1.5A x 1
- USB to RJ-45 Connector Cable 300 mm x 1
- Camera Stand x 1
- Camera Antenna x 1

Motion PIR

- Battery AA 1.5V x 3
- Sticky pad x 1
- Screw Set x 1
- Bracket x 1

RF Keypad

- Battery AA 1.5V x 4
- Wall Bracket x 1
- Screw Set x 1
- RF Tags x 2

Outdoor Siren

- Battery D 1.5V x 4
- Wall Bracket x 1
- Screw Set x 1

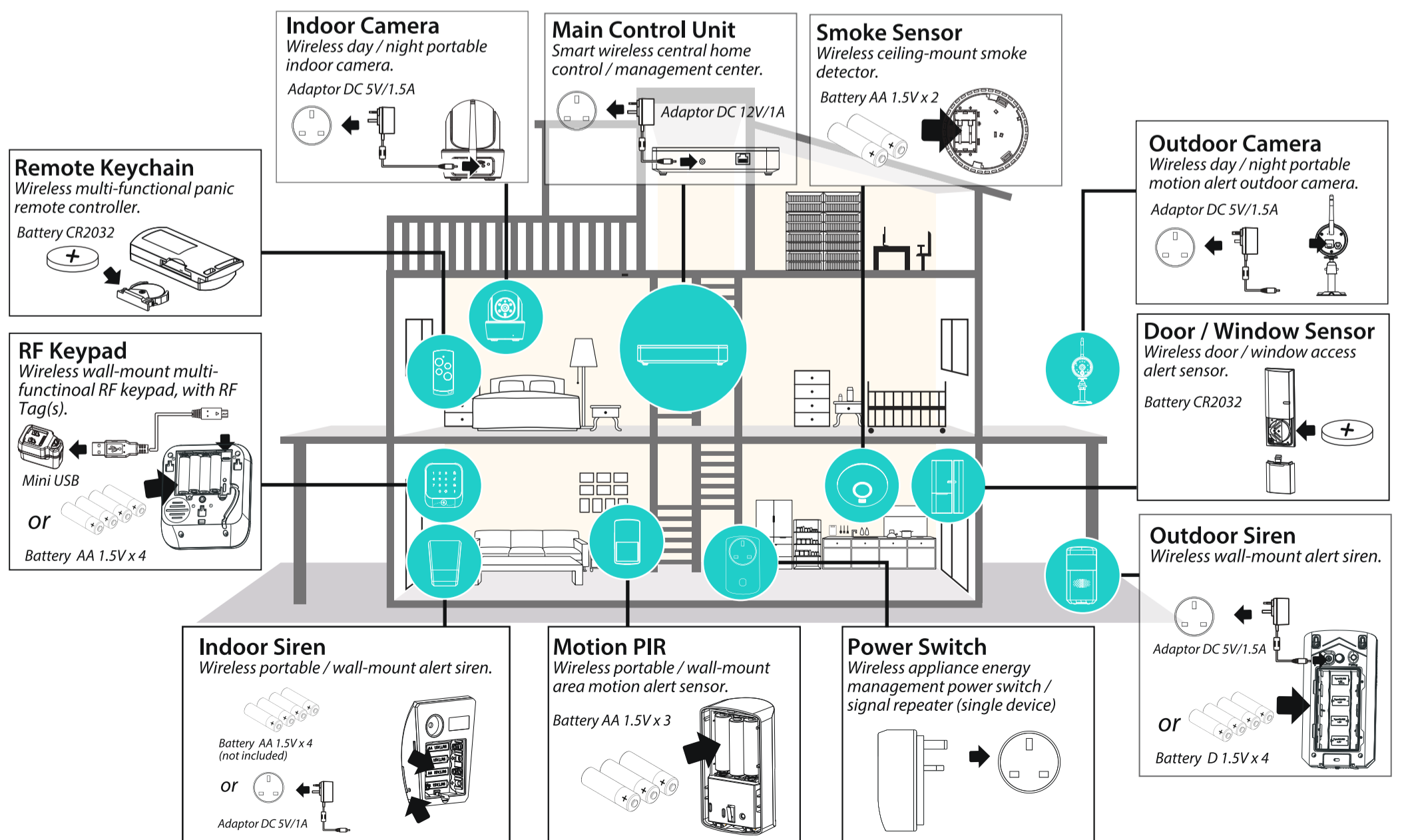
Power Switch

- NA

Smoke Sensor

- Battery AA 1.5V x 2
- Bracket x 1
- Screw Set x 1

SYSTEM INTRODUCTION



GETTING STARTED

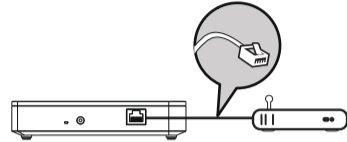
1. App Download/Installation

(1) Please first make sure your internet is in proper working condition. **It is a MUST that the mobile device is connected to home Wi-Fi router through out the app download/installation and system setup.**

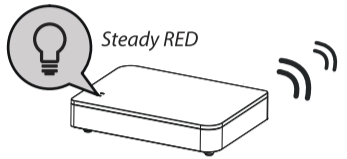


2. Connect the Main Control Unit to the Internet

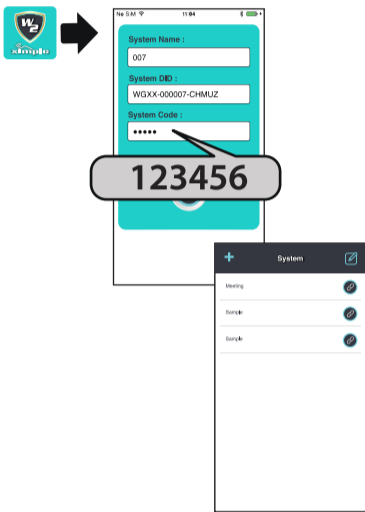
(1) First connect the Main Control Unit to Wi-Fi router via the Ethernet cable supplied, then power on the Main Control Unit by using the power adaptor supplied. The Main Control Unit will beep once indicating power on success.



(2) The RED power LED indicator will light up and in a few seconds the Main Control Unit will beep twice indicating the Main Control Unit is ready for setup via 'Ximple W2' app.


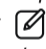
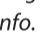



(3) Launch the 'Ximple W2' app. The app will first search for the Main Control Unit connecting to the home Wi-Fi router and retrieve the Main Control Unit DID/password automatically. Please assign the Main Control Unit with preferred system name. If the Main Control Unit DID/password cannot be retrieved, please check to make sure the Main Control Unit is powered on and the Ethernet cable is securely connected to the Wi-Fi router.



Note: (1) The Main Control Unit should be powered on and connected to the Wi-Fi router at all time. (2) You can always input the Main Control Unit DID/password manually. The Main Control Unit DID is located at the bottom of the Main Control Unit and the password by default is '123456'. (3) For selected models, please keep the Main Control Unit plugged in for at least 24 hours for fully charge.

Tap the Main Control Unit to log in. You can now continue with setup for camera(s), sensor(s) and remote keychain(s).

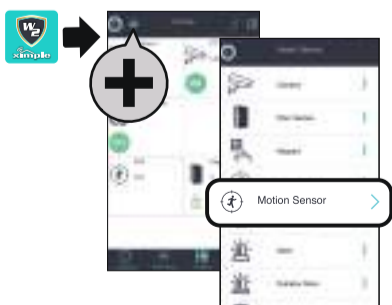
(6) For camera to work wirelessly with Main Control unit, you will need to add router to app:
Go to Status , tap Edit  on upper right and select camera edit  to enter camera info.

In camera info section, tap  and enter camera password (default: 123456) to enter Advanced Settings. In Wi-Fi setting section, choose the router and enter its password. Camera will automatically reboot (while please remove the Ethernet cable). Your camera can operate wirelessly after both LED's is/are on steadily. (60-90 secs)



Verifying the connection:

Go to Status and your new camera should ON, tap it once to see live view.





4. Setup the Sensor(s) and Remote Keychain

Note: There are two ways to add sensor(s) and remote keychain to the new system - auto and manual pairing.

Auto pairing is designed for first time pairing, only use manual pairing when you have already removed the insulating tab prior to the setup and system reset (removing all settings).

Pairing the Motion Sensor

- (1) Launch the 'Ximple W2' APP. Click the  icon.
- (2) Choose 'Motion Sensor' and  to initiate the pairing process.





3. Setup the Camera

Note: You can ONLY setup using camera(s) specified compatibility with the system, also, if you have previously purchased and installed compatible camera(s), you will only need to complete steps (3) and (4) for your existing camera to work with the new system.

(1) First connect the camera to the Wi-Fi router via the Ethernet cable supplied.

(2) Power on the camera via the power adaptor supplied and wait until the GREEN LED indicator becomes steady on.

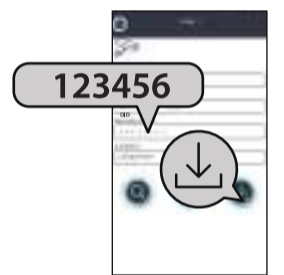
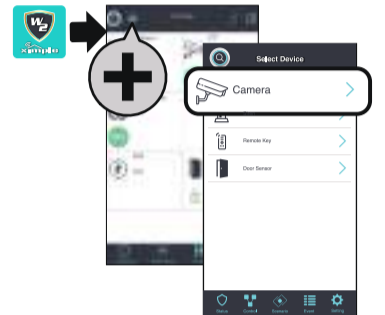
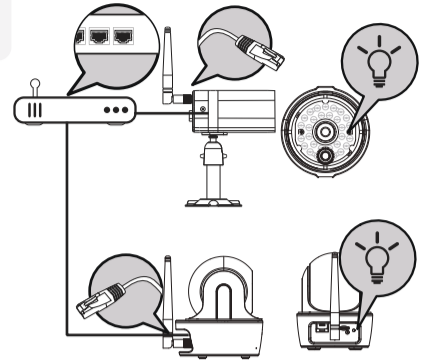
Note: DO NOT begin the APP setup process until both LEDs become steady on. Pan & tilt has only one LED in green and takes around to go seconds to be steady on.

(3) Launch the 'Ximple W2' app, select the Main Control Unit, tap  in the 'Status' section and choose  to add new camera to the Main Control Unit. The app will now search for the camera connecting to the router and pull in the camera DID.

(4) Please now name your camera and specify the location of where the camera will be installed. The camera default Security Code is '123456' (previously installed camera may have been assigned with different security code). Tap 'Save' to complete pairing the camera to the Main Control Unit.

Note: (1) The app will first search for the available camera connected to the Wi-Fi router. (2) If the camera cannot be found, please first check to make sure the camera is powered on and the Ethernet cable is securely connected to the Wi-Fi router. (3) You can always enter the camera DID/password manually. The camera DID is located on the camera and the password by default is '123456'.

(5) If you prefer using Ethernet cable, you can now swap out the cable supplied with your own. For wireless connection/operation please follow steps below.

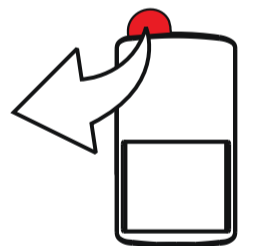


(3) Remove the insulating plastic to send out the pairing signal.


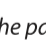
For manual pairing method, please refer to the user manual for more details.

Verifying the connection:

After complete pairing, face the motion sensor to wall where no movement can be detected, wait for few minutes for the sensor to complete condition analysis. Wave your hand in front of the sensor, the blue LED of motion sensor will flash once, following with alert indicator should appear next to the motion sensor section on the status page of the app.



Pairing the Power Switch

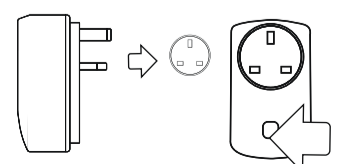
- (1) Launch the 'Ximple W2' APP. Click the  icon.
- (2) Choose 'Power Switch' and  to initiate the pairing process.
- (3) Plug on the power switch to the electrical outlet to send out the pairing signal.

For manual pairing method, please refer to the user manual for more details.


Verifying the setup:

After complete pairing, with power switch plugged into the electrical outlet and connect light fixture to the switch. If the light fixture or any other device has its own On/Off switch, please keep it to 'On' position. Tap the power switch icon on the status page to turn light on and off.

Note: A. The blue LED will light up when the switch is off so you can locate the switch in the dark. B. The power switch can also double as 'Repeater'. This function is for advanced user. For details please refer to Power Switch/Repeater section of the owner's manual.



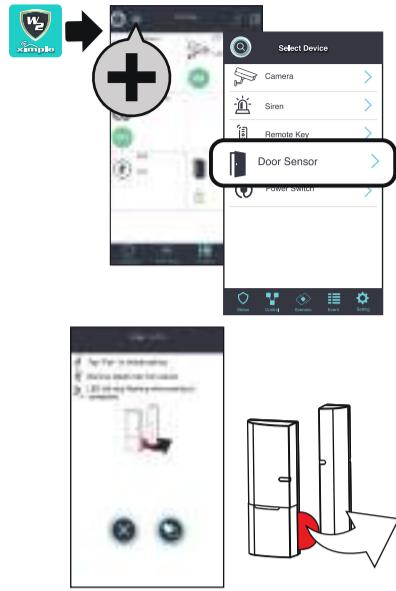
Pairing the Door/Window Sensor

- (1) Launch the 'Ximple W2' APP. Click the **+** icon.
- (2) Choose 'Door Sensor' and  to initiate the pairing process.
- (3) Remove the insulating plastic to send out the pairing signal.


For manual pairing method, please refer to the user manual for more details.

Verifying the setup:

After complete pairing, separate the sensor and the blue LED will flash once, following with alert indicator should appear next to the Door/Window sensor section on the status page of the app.



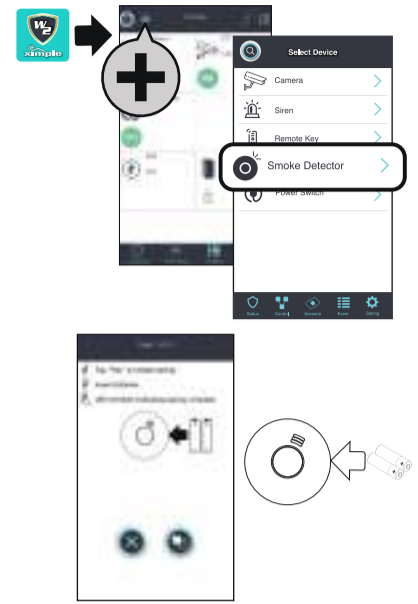
Pairing the Smoke Sensor

- (1) Launch the 'Ximple W2' APP. Click the **+** icon.
- (2) Choose 'Smoke Sensor' and  to initiate the pairing process.
- (3) Remove the insulating plastic to send out the pairing signal.


For manual pairing method, please refer to the user manual for more details.

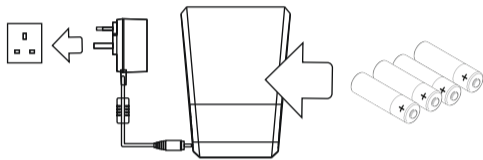
Verifying the setup:

After complete pairing, press the "test" key on the sensor, the sensor will go off for few seconds and alert indicator should appear next to the smoke sensor section on the status page of the app.



Pairing the Indoor Siren

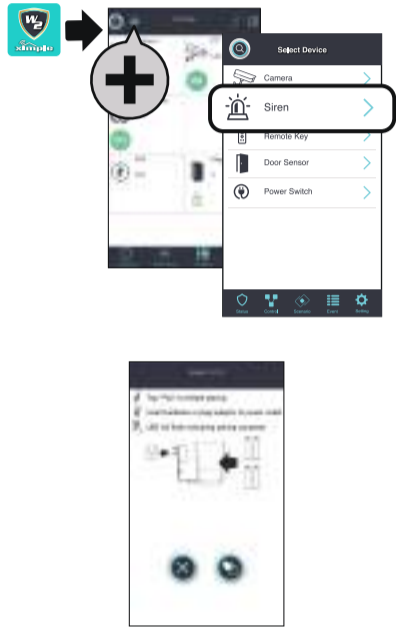
- (1) Launch the 'Ximple W2' APP. Click the **+** icon.
- (2) Choose 'Indoor Siren' and  to initiate the pairing process.
- (3) Plug the supplied adaptor to the outlet or instead you can insert 4 AA batteries, once powered on, the Indoor Siren will automatically send out the pairing signal.




For manual pairing method, please refer to the user manual for more details.

Verifying the setup:

After complete the pairing, go to the 'status' to tap 'on' to activate siren. Tap 'off' to deactivate the siren.



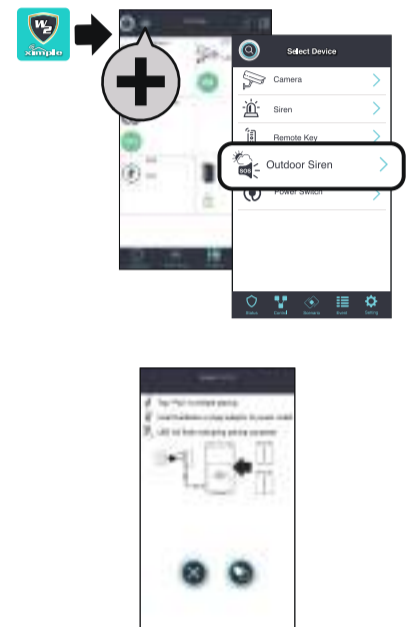
Pairing the Outdoor Siren

- (1) Launch the 'Ximple W2' APP. Click the **+** icon.
- (2) Choose 'Outdoor Siren' and  to initiate the pairing process.
- (3) Remove the insulating plastic to send out the pairing signal.


For manual pairing method, please refer to the user manual for more details.

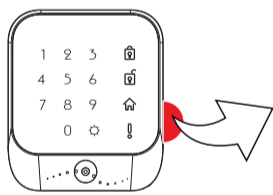
Verifying the setup:

After complete the pairing, go to the 'status' to tap 'on' to activate siren. Tap 'off' to deactivate the siren.




Pairing the RF Keypad

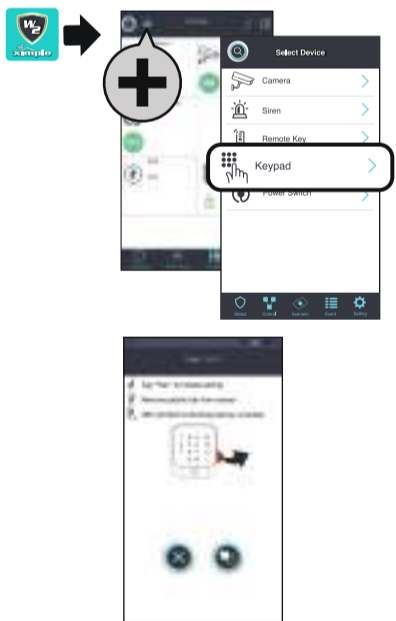
- (1) Launch the 'Ximple W2' APP. Click the **+** icon.
- (2) Choose 'Pairing the RF Keypad' and  to initiate the pairing process.
- (3) Remove the insulating plastic to send out the pairing signal.



For manual pairing method, please refer to the user manual for more details.

Verifying the setup

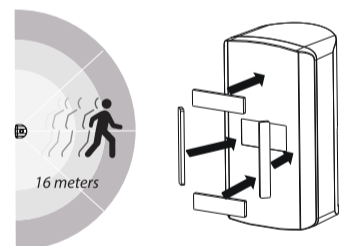
Press the  and the Main Control Unit will beep once, indicating pairing success.



5. Installation

Installing the Motion Sensor

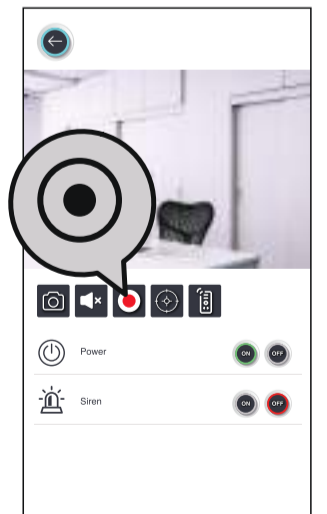
- (1) Place the motion sensor upward, facing the location to be monitored. The detection distance is up to 16 meters.
- (2) For best detection coverage, mount the motion sensor 2-2.5M on wall, either using double-sided tape or the wall-mount bracket and its screws.




Installing the Camera

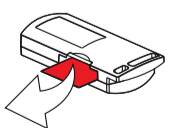
- (1) Secure the camera stand on a stable surface.
- (2) Loosen up the thumb screw.
- (3) Adjust proper view angle before securely fasten the T-bolt joint.

Note: Make sure the micro SD card is inserted to the memory card slot for camera to record.




Pairing the Remote Keychain

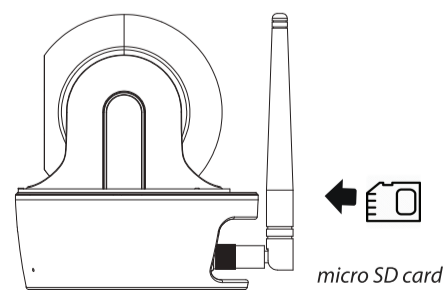
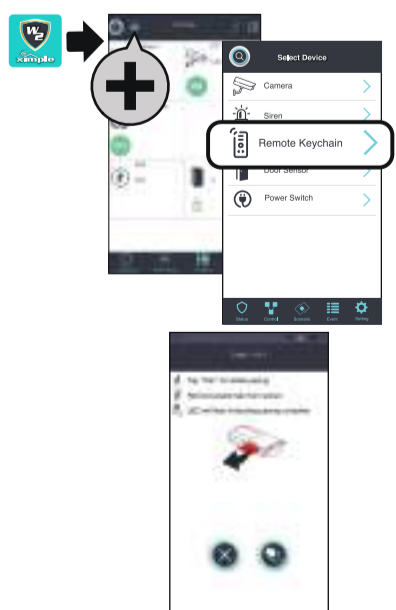
- (1) Launch the 'Ximple W2' APP. Click the **+** icon.
- (2) Choose 'Remote keychain' and  to initiate the pairing process.
- (3) Remove the insulating plastic to send out the pairing signal.



For manual pairing method, please refer to the user manual for more details.

Verifying the connection:

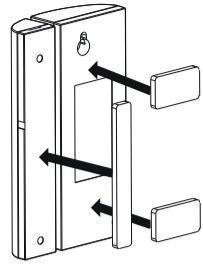
Press the  and the Main Control Unit will beep once, indicating pairing success.



Installing the Door/Window Sensor

Using the double-sided tape:

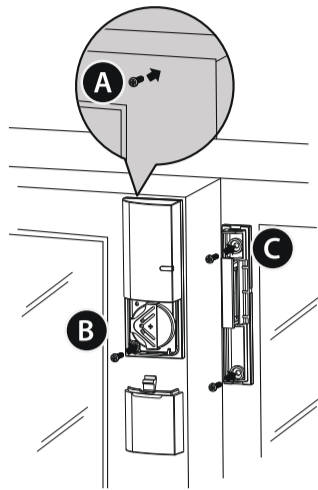
(1) Apply the double-sided tape to the backs of the Door/Window sensor and mount the large piece onto the immovable frame; the small piece goes onto the door/window itself. Please make sure both pieces align with each other.



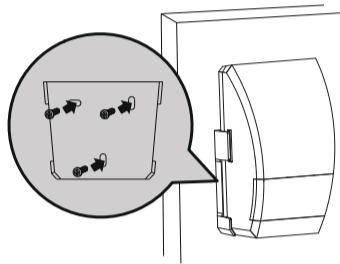
(2) Open the door/window to test device. You will receive an alert on your mobile device if the app and sensor are installed/setup correctly.

Using the mounting screws:

(1) First fix the mounting screw (A) directly onto the door/window frame, hang the sensor onto the screw, following by removing the battery compartment cover to fix the second mounting screw (B).



(2) Open back cover of the small piece. Use the mounting screws to fix the back cover on the movable part of the door/window frame (C). Mount the sensor onto the back cover.

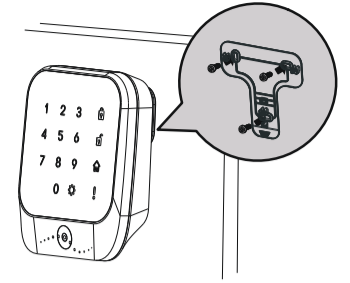


Installing the Siren

It is recommended to install (wall-mount / place on flat surface) the Siren in a highly visible location with minimum obstacles near for maximum visual and sound alert deterrence in critical situations. A/C power option is available, choose a suitable power outlet location for the installation.

Installing RF Keypad

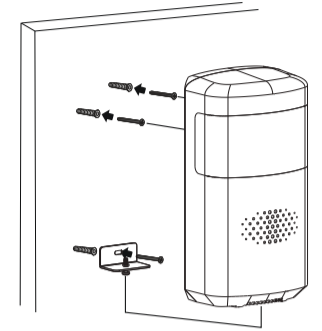
(1) Mount the wall bracket onto a flat surfaced wall via the screw set supplied.



(2) With batteries inserted and/or adaptor plugged into the keypad's rear power connector, secure the keypad onto the wall bracket.

Installing the Outdoor Siren

(1) First fix the mounting screws and secure bracket to the wall via the screw set supplied.

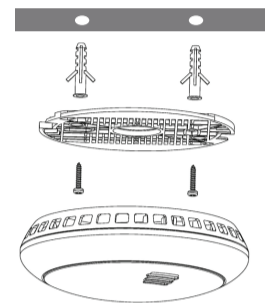


(2) With batteries inserted and/or adaptor plugged into the siren rear power connector, secure the siren onto the wall.

(3) Secure the siren to the secure bracket via the bracket screw supplied.

Installing the Smoke Sensor

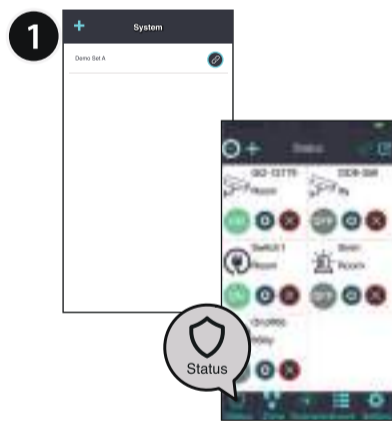
(1) First fix the mounting screws and secure the bracket to the ceiling via the screw set supplied.



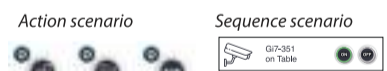
(2) With batteries inserted, secure the sensor onto the bracket.

6. APP Operation

1 Tap on preferred Main Control Unit to enter. In Status section: Display the real time status of devices and system (arm/disarm). Tap 'Status' to refresh the page. You can tap on camera for live-view, power switch to turn device On/Off. When motion sensor/door sensor/siren is triggered, alert indicator will appear next to the sensor, tap once to remove the indicator. In Scenario section: There are two types of scenario sections - Action Scenario (ARM/Camera/Panic) and Sequence scenario.



Action Scenario is for or simple one-touch activation/deactivation of A system arm, B camera record and C panic function. Predefine what devices to be included in each please follow setup procedures below:



1 Tap " " and then the " " appearing on top of the Action Scenario Icons for setup.

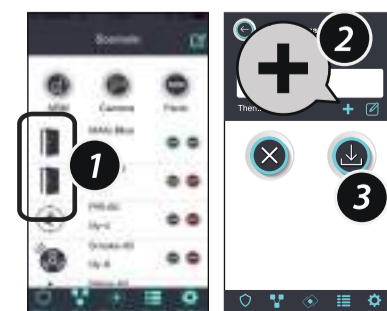


2 App will automatically display all available devices (cameras and sensors) already paired to the system - Tap to mark the ones to be included for the specific control.

3 Tap "Save" to complete the setup.

Note: Enable for the system remote controller to function properly, you must complete the setup for Action Scenario's to be included for the function and save setting at the end.

Sequence Scenario is for preset device actions after system detects abnormal events. Only camera, door sensor and motion sensor can initiate actions of other sensors (example: when door sensor detects movement, it triggers on the power switch to turn on light).



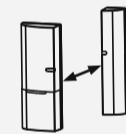
1 Choose by tapping a device from the Sequence Scenario Device List generated automatically by app.

2 Tap " + " to include the preferred sensor. You can add multiple sensors by repeating the same procedure.

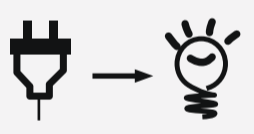
3 Tap "Save" to complete the setup.

Example:

When...
Door Sensor A triggered



Then...
Power Switch B turns on light fixture



Event:

Event section will show List of triggered events from device(s) and playback from camera(s).



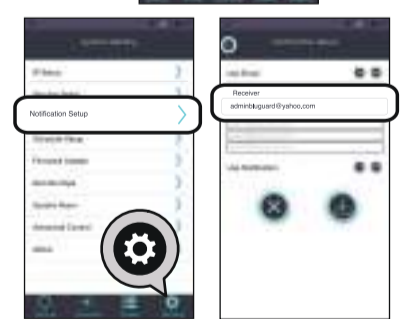
Email Alert / Push Notification

If you wish to receive email alert and/or push notification when system has been triggered and panic :

(1) Please go to 'Setting' (default password '123456') and enter 'Notification Setup'.

(2) Activate 'Email' and enter your email information for email alert.

(3) Activate 'Notification' to receive push notification.



STATUS INDICATOR

- ON Sensor On
- OFF Sensor Off
- ▲ Sensor Triggered
- ⚡ Power Low
- ! Tamper Alert
- ✖ Delete
- ⚙ Edit Mode

ARCHTRON
Research & Development Sdn Bhd

Powered By
bluguard
security

www.bluguard.com.my

FCC Compliance Statement: This device complies with Part 15 of the FCC rules. Operation is subjected to the following two conditions: (1) this device may not cause harmful interference, and (2) this device must accept any interference received, including interference that may cause undesired operation.

Products with CE Marking comply with EMC Directive (2004/108/EC); Low Voltage Directive (73/23/EEC); R&TTE (1999/5/EC); ROHS Directive (2011/65/EU) issued by the Commission of the European Community. Compliance with these directives implies conformity to the following European Norms:
EMC: EN 301 489
LVD: EN 60950
Radio: EN 300 328

If the camera system no longer functions or can no longer be repaired, it must be disposed of according to the valid statutory regulations. Disposal of spent batteries/accumulators:
You are required by law (Battery Ordinance) to return all spent batteries and accumulators. Disposing of spent batteries/accumulators with common household waste is prohibited! Batteries/accumulators that contain hazardous substances are marked with the symbols on the side. These symbols indicate that it is prohibited to dispose of these batteries/accumulators in the household waste. The abbreviations for the respective heavy metals are: Cd=cadmium, Hg=mercury, Pb=lead. You can return spent batteries and accumulators that can no longer be charged to the designated collection points in your community, outlets or wherever batteries or accumulators are sold. Following these instructions will allow you to fulfill the legal requirements and contribute to the protection of our environment!