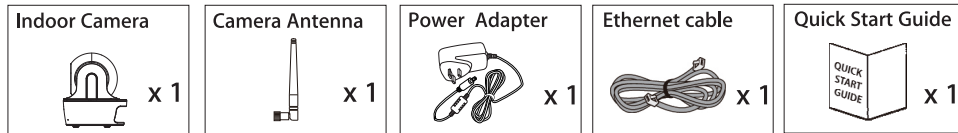


QUICK START GUIDE

KIT CONTENT :



Note: For video recording, **BE SURE TO** use CLASS 10 memory card or above (not included). Other kinds of memory card may cause unexpected results and should be avoided.

SETUP THE CAMERA

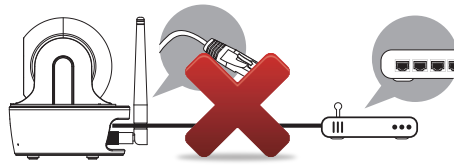
1. APP DOWNLOAD

Download the APP from App Store/Google Play.
APP name: Ximple Eye



2. Power up the camera

When GREEN LED starts a repeat cycle of one long flash followed by 3 short flashes, the camera is ready for Direct Wireless Connection. Normally it takes less than 1 minute.



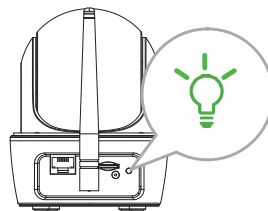
Plug in power adapter, do NOT plug in Ethernet cable.

3a. Direct Wireless Connection

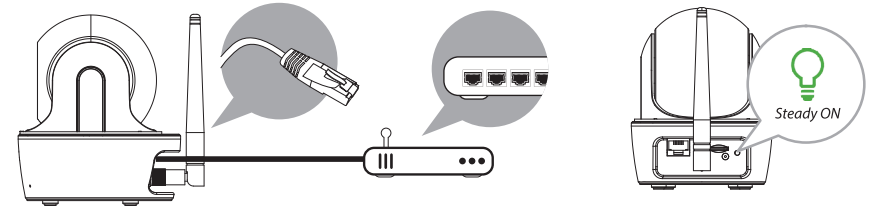
(1) Go to the Wi-Fi setting on your mobile device.
Choose the Wi-Fi router with prefix of HD-xxxxxx (xxxxxx=Camera ID numbers).
Enter the default password 12345678 and save the settings.

(2) From the APP, tap the "ADD Camera"  and then

"search" icon. The camera ID will show up. Enter the default password 123456 and save the settings. When the Green LED long flashes once followed by 2 short flashes, it means the direct wireless connection is successfully established. You'll see the camera view right now. Please go on to Step 4.



3b. You can also establish a connection via Ethernet cable.



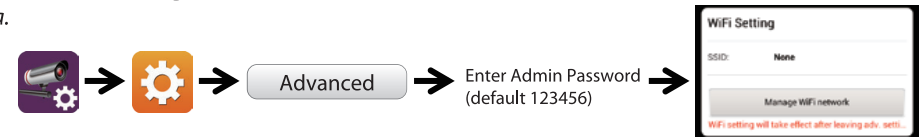
- (1) Connect your mobile device to your home router. Connect camera to your home wifi router using Ethernet cable then power on the camera. Camera will take 40 seconds to connect to router, when done, Green LED will stay ON.
- (2) From the APP, tap the "Search" button to locate the camera. Enter the default password 123456. Then save the settings.

Note:

Camera ID (DID) is a set of alphanumeric characters that you can find on camera body. Please secure the Camera ID somewhere safe when you complete the settings.

4. Wi-Fi Setting

4a.



Choose the appropriate Wi-Fi router for your local network

4b. Camera will offline for around 40 seconds to reboot for Wifi connection. When camera connects to wifi router correctly, Green LED will stay ON.

4c. Go to the Wi-Fi setting on your mobile device again, make sure the wifi router you are connecting to is the same as the camera's wifi router. If not, manually assign to it.

BE sure to choose your local home Wi-Fi router of your local network in the ADVANCED SETTING. The system will begin to count down and reboot the system. The camera view will show on screen again after Wi-Fi setting has been updated.

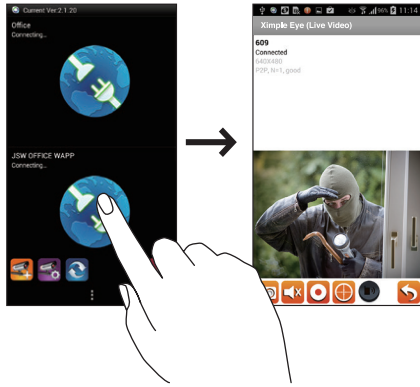
Note:

1. Wi-Fi setting may fail if you leave the ethernet cable connected. Please remove the cable after settings have been completed.
2. The camera will only accept SSID composed with English alphabet characters and arabic numbers, non-English and special characters (!@#%\$, etc) will not be accepted.

If camera fails to connect to the assigned Wi-Fi router, you need to redo setting again by using a pin object to hold down [Reset] for 5 seconds to reset the camera. LED will start fast flash. When fast flash stopped and restore to steady ON or a repeat cycle of one long flash followed by 2 short ones, repeat Step 2.

LIVE VIEW / SNAPSHOT / PLAYBACK

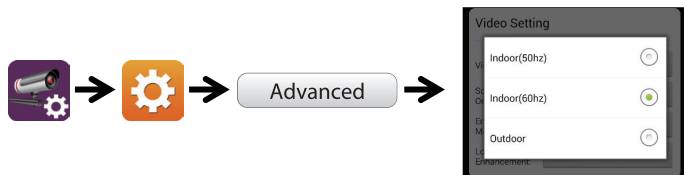
LIVE VIEW



SNAPSHOT

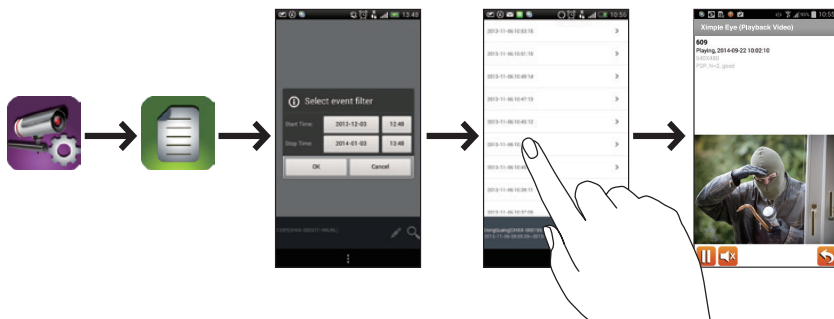
- Tap to capture screen images.
- Tap to turn on/off the volume in Live View mode.
- Tap to record video in device memory card.
- Tap to set or return preset point.
- Tap and hold the icon to talk in both direction (Push to Talk).
- Tap to return to the main page.

"Image Tone Adjustment" – "Due to different types of environment, when necessary, please follow the steps described here to adjust the color tone (warm vs. cool) of the image."



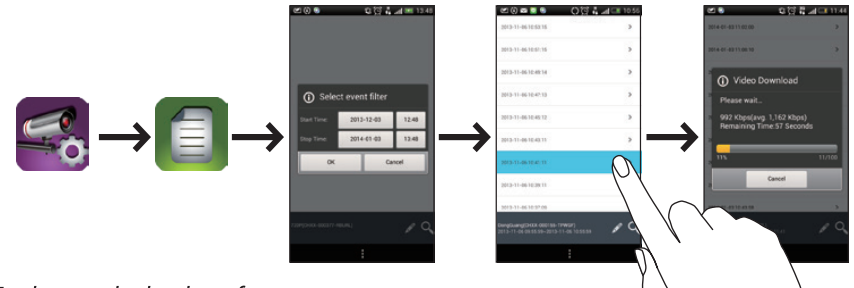
PLAYBACK

- 1 Tap the Camera Setting and then the Event List icon.
- 2 Select the time interval for the event list.
- 3 Tap the file that you want to playback from the list.



DOWNLOAD

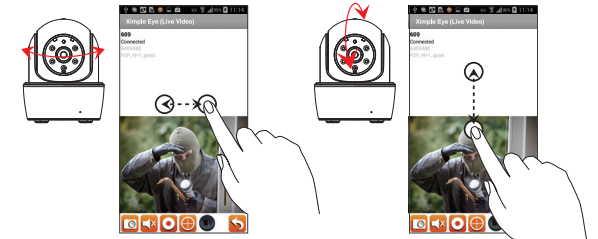
- 1 Tap the Camera Setting and then the Event List icon.
- 2 Select the time interval for the event list.
- 3 Long press the video clip to download the file onto your mobile device.



For better playback performance,
 Android user: use [MX player] app (software decoder) to playback. It is a free app on Google Play.
 iOS user: use [Oplayer Lite] app to playback. It is a free app on App store.

Pan & Tilt

- 1 In the Live View, control camera direction via finger swipe.
- 2 Tap to set or return preset point.



FACTORY DEFAULT SETTING

Press and hold the reset button on the power cable for 5 seconds and the system will start the reset process. The system will restore to factory default and you may start the Wi-Fi setup.

FCC Compliance Statement: This device complies with Part 15 of the FCC rules. Operation is subjected to the following two conditions: (1) this device may not cause harmful interference, and (2) this device must accept any interference received, including interference that may cause undesired operation.

Products with CE Marking comply with EMC Directive (2004/108/EC); Low Voltage Directive (73/23/EEC); R&TTE (1999/5/EC); ROHS Directive (2011/65/EU) issued by the Commission of the European Community. Compliance with these directives implies conformity to the following European Norms:
 EMC: EN 301 489
 LVD: EN 60950
 Radio: EN 300 328

If the camera system no longer functions or can no longer be repaired, it must be disposed of according to the valid statutory regulations. Disposal of spent batteries/accumulators:
 You are required by law (Battery Ordinance) to return all spent batteries and accumulators. Disposing of spent batteries/accumulators with common household waste is prohibited! Batteries/accumulators that contain hazardous substances are marked with the symbols on the side. These symbols indicate that it is prohibited to dispose of these batteries/accumulators in the household waste. The abbreviations for the respective heavy metals are: Cd=cadmium, Hg=mercury, Pb=lead. You can return spent batteries and accumulators that can no longer be charged to the designated collection points in your community, outlets or wherever batteries or accumulators are sold. Following these instructions will allow you to fulfill the legal requirements and contribute to the protection of our environment!