

# TNO-6322ER

2MP Explosion-proof Camera

Network



FC|CE|EAC

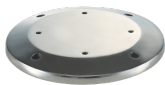
## Key Features

- Max. 2MP (1920 x 1080) resolution
- H: 61.8(Wide)~2.19(Tele) / V: 36.2(Wide)~1.24(Tele) Field of View
- Max. 60fps/50fps (60Hz/50Hz)
- H.265, H.264, MJPEG codec, WiseStream II
- IR viewable length 70m
- Day & Night (Auto ICR), WDR (120dB)
- Explosion-proof certificate: IECEX, ATEX, KCs
- Stainless 316L, Built-in wiper
- IP67, IK10

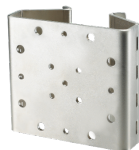
## Compatible Accessories (Optional)



SBE-100WM



SBE-100B



SBE-100PM

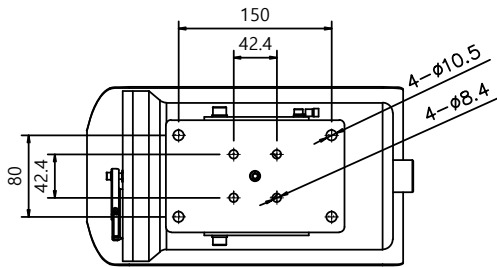
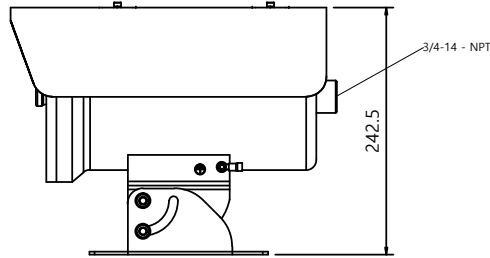
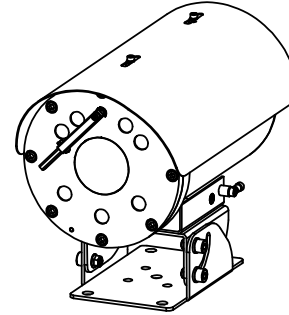
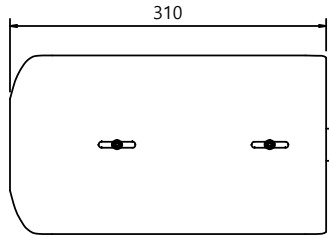
Video	
Imaging Device	1/2.8" CMOS
Resolution	1920x1080, 1280x1024, 1280x960, 1280x720, 1024x768, 800x600, 800x448, 720x576, 720x480, 640x480, 640x360, 320x240
Max. Framerate	H.265/H.264: Max. 60fps/50fps(60Hz/50Hz) MJPEG: Max. 30fps/25fps(60Hz/50Hz)
Min. Illumination	Color: 0.05Lux (1/30sec, F1.6) B/W: 0.005 Lux (1/30sec, F1.6), 0Lux(IR LED on)
Lens	
Focal Length (Zoom Ratio)	4.44 ~ 142.6mm(32X) zoom
Max. Aperture Ratio	F1.6(Wide)~F4.4(Tele)
Angular Field of View	H: 61.8(Wide)~2.19(Tele) / V: 36.2(Wide)~1.24(Tele)
Min. Object Distance	Wide 1.5m, Tele 2m
Focus Control	One shot AF
Lens Type	DC auto iris
Operational	
Camera Title	Displayed up to 85 characters
Day & Night	Auto(ICR)
Backlight Compensation	BLC, HLC, WDR, SSSDR
Wide Dynamic Range	120dB
Digital Noise Reduction	SSNR V
Digital Image Stabilization	Support
Defog	Support
Motion Detection	8ea, 8point polygonal zones
Gain Control	Low / Middle / High
White Balance	ATW / AWC / Manual / Indoor / Outdoor
Electronic Shutter Speed	Minimum / Maximum / Anti flicker (1~1/12,000sec)
Analytics	Defocus detection, Directional detection, Fog detection, Face detection, Motion detection, Appear/Disappear, Enter/Exit, Loitering, Tampering, Virtual line, Audio detection
Alarm I/O	Input 1ea / Output 1ea
Alarm Triggers	Analytics, Network disconnect, Alarm input
Alarm Events	File upload via FTP and e-mail Notification via e-mail NAS recording at event triggers Alarm output Zoom Preset
Audio In	Selectable(mic in/line in) Supply voltage: 2.5VDC(4mA), Input impedance: 2K Ohm
Audio Out	Line out, Max.output level: 1Vrms
IR Viewable Length	70m (229.66ft)
Water Removal	Support (with Wiper)
Network	

Ethernet	RJ-45 (10/100BASE-T)
Video Compression	H.265/H.264: Main/Baseline/High, MJPEG
Audio Compression	G.711 u-law /G.726 Selectable G.726(ADPCM) 8KHz, G.711 8KHz G.726: 16Kbps, 24Kbps, 32Kbps, 40Kbps AAC-LC: 48Kbps at 16KHz
Smart Codec	Manual(5ea area), WiseStream II
Bitrate Control	H.264/H.265: CBR or VBR MJPEG: VBR
Streaming	Unicast(20 users) / Multicast Multiple streaming(Up to 10 profiles)
Protocol	IPv4, IPv6, TCP/IP, UDP/IP, RTP(UDP), RTP(TCP), RTCP,RTSP, NTP, HTTP, HTTPS, SSL/TLS, DHCP, FTP, SMTP, ICMP, IGMP, SNMPv1/v2c/v3(MIB-2), ARP, DNS, DDNS, QoS, PIM-SM, UPnP, Bonjour
Security	HTTPS(SSL) login authentication Digest login authentication IP address filtering User access log 802.1X authentication(EAP-TLS, EAP-LEAP)
Application Programming Interface	ONVIF Profile S/G/T SUNAPI(HTTP API) Wisenet open platform
<b>General</b>	
Webpage Language	English, Korean, Chinese, French, Italian, Spanish, German, Japanese, Russian, Swedish, Portuguese, Czech, Polish, Turkish, Dutch, Hungarian, Greek
Memory	1024MB RAM, 256MB Flash
<b>Environmental &amp; Electrical</b>	
Operating Temperature / Humidity	IR Off : -40°C~+60°C(-40°F ~ +140°F) / Less than 95% RH IR On : -40°C~+55°C(-40°F ~ +131°F) / Less than 95% RH
Storage Temperature / Humidity	-30°C~+60°C(-22°F ~ +140°F) / Less than 95% RH
Certification	IECEX, ATEX, KCs, KC, CE IP67, IK10
Input Voltage	24VAC
Power Consumption	24VAC: Max 45W
<b>Mechanical</b>	
Color / Material	Metalic Silver / Stainless 316L
Product Dimensions / Weight	175(W)x242.5(H)x320(D)mm(6.89x9.59x12.59") / 11.5kg(25.35lb)

- The latest product information / specification can be found at [hanwha-security.com](http://hanwha-security.com)
- Design and specifications are subject to change without notice.
- Wisenet is the proprietary brand of Hanwha Techwin, formerly known as Samsung Techwin.

NCE

NO	DESCRIPTION	DISIGN	DATE
⚠			
⚠			
⚠			
⚠			
⚠			
⚠			



ITEM	PART NO.	DESCRIPTION	QTY	REMARKS
			1	

Surface Roughness(Ra), ISO 468

$\sqrt{}$  =  $\sqrt{}$ , S, S  
 $\sqrt{}$  = 25 $\sqrt{}$ , 100S,  $\nabla$ , N11  
 $\sqrt{}$  = 63 $\sqrt{}$ , 25S,  $\nabla$ , N9  
 $\sqrt{}$  = 16 $\sqrt{}$ , 6.3S,  $\nabla$ , N7

GENERAL TOLERANCE/			
CLA	(A)	B	C
DIM.			
1 - 4	±0.05	±0.10	±0.25
4 - 16	±0.07	±0.20	±0.35
16 - 63	±0.10	±0.30	±0.50
63 - 250	±0.18	±0.55	±0.90
250 - 500	±0.30	±0.90	±1.50
500 - 1000	±0.50	±1.50	±2.50

FILE NAME			MATERIAL/材质		FINISH		DRW.NO/图号
			Stainless 316L				
SCALE	UNIT	TOLERANCE	DESIGN	CHECK	APPROVE	DESCRIPTION	
1.000	MM		HY. WOO			외관도 描述	
DATE	2020.10.13				/		
KEVIS ELECTRONICS INC.						MODEL NO./型号	TNO-6322ER
						SIZE	A0