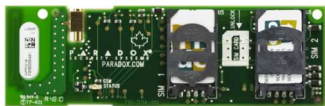


MAGELLAN All-in-One Console Communicator Module



GPRS14

Plug-In Communicator Module

► Features

- Accessory for the MG6250, used to support GPRS / GSM / SMS reporting
- Supports 2 standard cellular provider SIM cards, for provider redundancy
- Simple installation; connects directly onto PCB
- Dimensions: 11 x 3.5 x 1.5 cm (4.3 x 1.4 x 0.6 in.)



ANTKIT

Antenna Extension for GPRS14

► Features

- Improves reception by extending the GPRS14 antenna
- Includes wall-mounting bracket
- Length: 2m / 6 ft

MAGELLAN Special Modules



2WPGM

2-Way Wireless PGM

► Features

- 1 programmable, 5A relay output
- Activation events
- Activates / Deactivates PGM after event or timer
- Backup Alarm Reporting option (activates PGM output if communication between the MAGELLAN console and the 2WPGM is lost)
- Built-in transceiver
- Universal input (N.O. / N.C.)
- Anti-tamper switch
- Can be powered by the PA12

► Specifications

| | |
|-----------------------|---|
| Input Voltage | 6 to 16.5 Vac or 5 to 20 Vdc |
| RF Frequency | 433 or 868 MHz |
| Wireless Range | Typical residential environment 35m (115 ft) with MG6250 70m (230 ft) with MG5000 / MG5050 and RTX3 |
| Operating Temperature | 0 to 50 °C (32 to 122 °F) |
| Dimensions | 12.5 x 4.6 x 2.5 cm (4.9 x 1.8 x 1.0 in.) |



TECHNOLOGY



MAGELLAN Power Adapters



PA6

6 Vdc Power Adapter Plug

► Features

- For use with K32RF
- Provides 6 Vdc at 350 mA maximum
- Includes 1 of 5 different power outlets
- Dimensions: 4 x 8 x 7 cm (1.6 x 3.1 x 2.8 in.)



PA7

7.5 Vdc Power Adapter Plug

► Features

- For use with MG6250
- Provides 7.5 Vdc at 1A max
- Includes 1 of 5 different power outlets
- Dimensions: 4 x 8 x 7 cm (1.6 x 3.1 x 2.8 in.)



PA12

13.8 Vdc Power Adapter Plug

► Features

- For use with 2WPGM
- Provides 13.8 DC at 1A max
- Includes 1 of 5 different power outlets
- Dimensions: 4.3 x 7 x 5.1 cm (1.7 x 2.8 x 2 in.)